

Description

The pressure booster doubles the system pressure of e.g. 5 bar to an outlet pressure of 10 bar. The pumping force of two cylindrical chambers compresses the air down to the set outlet pressure within the third chamber while the fourth chamber is vented. Upon reaching the outlet pressure it is turned off, when falling below it is turned on automatically. Pressure boosters are used for occasional demand of compressed air.

Media

lubricated and 50 µm filtered compressed air

Mounting position

any
double piston intensifier, ratio 1:2 Reversing, check and switching valves provide for automatic control. Life time approx. 20 million switching cycles.

Inlet pressure P_1

2...8 bar

Outlet pressure P_2

4...16 bar
are recommended. They compensate pressure fluctuations and allow short-term high volume flows. See circuit below.

Tank filling time

is a measure of booster performance. To reduce the filling time of the tank, it has to be prefilled with input pressure P_1 . See circuit below.

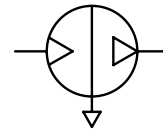
Temperature range

-5 °C to 50 °C / 23 °F to 122 °F

Material

Cylinder: anodized aluminium

seals: NBR/Buna-N



**max. 4...20 bar
transmission ratio 1:2**

Dimensions			Weight	Connection	Transmission	Flow	Fill time	Pressure	Order
A	B	C	kg	thread	ratio	rate	10l-tank	range	number
mm	mm	mm		G	$P_A : P_2$	l/min*1	s	bar	

Pressure booster

P_1 max. 8 bar, for compressed air

AB

100	192	70	1.5	G $\frac{1}{8}$	1 : 2	130	30	4...16	AB040
117	284	90	3.0	G $\frac{3}{8}$	1 : 2	260	15	4...16	AB063
176	468	155	12	G $\frac{1}{2}$	1 : 2	440	6	4...16	AB100



AB040

Pressure booster with regulator and gauge

P_1 max. 8 bar, for compressed air

AB-D

100	192	126	1.5	G $\frac{1}{8}$	1 : 2	130	30	4...16	AB040D
117	284	168	3.0	G $\frac{3}{8}$	1 : 2	260	15	4...16	AB063D
176	468	218	12	G $\frac{1}{2}$	1 : 2	440	6	4...16	AB100D



AB040D

Accessories, enclosed

Mounting plate

made of steel, central attachment below

for AB040

BW00-49

for AB063

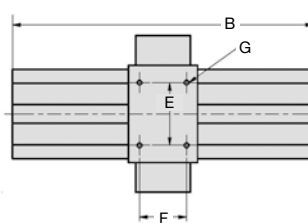
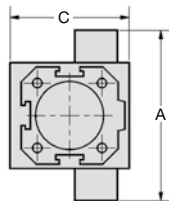
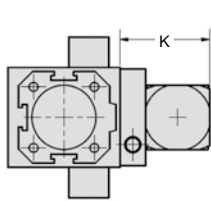
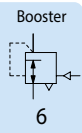
BW00-50

Mounting bracket

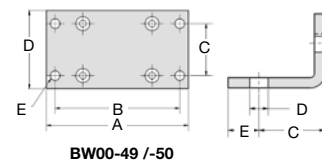
made of steel, mounting at the side, 1 piece

for AB100

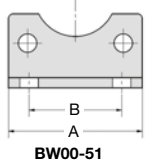
BW00-51



Device	A	B	C	D	E	F	G	H	K
AB040	100	192	70	57	40	30	M4	G $\frac{1}{8}$	56
AB063	117	284	90	75	60	40	M6	G $\frac{3}{8}$	78
AB100	176	468	155	130	114	45	M8	G $\frac{1}{2}$	63

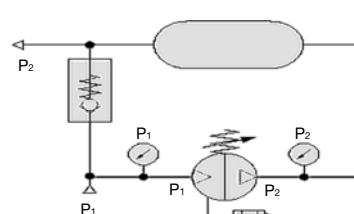


BW00-49 /-50

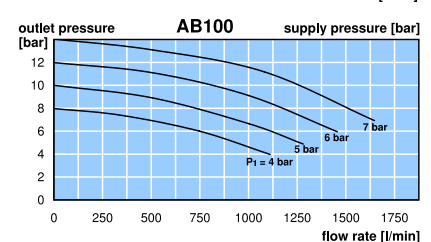
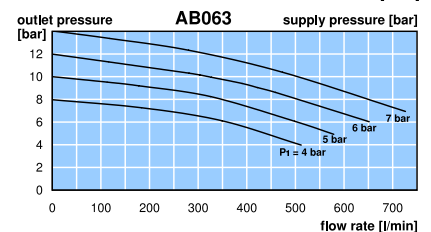
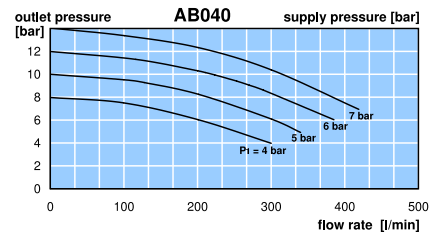
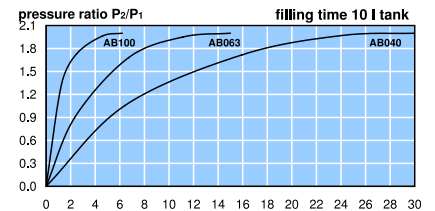
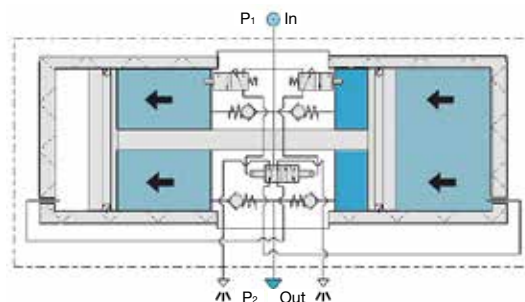


BW00-51

BW00-	A	B	C	D	E
49	82	72	30	45	5,5
50	110	98	53	70	M8
51	65	45	32	9	15



circuit with air tank



*1 at $P_2 = 8$ bar and 1 bar pressure drop

Pressure booster with 2 l to 20 l tank on request

PDF CAD
www.aircom.net



Order example:
AB040